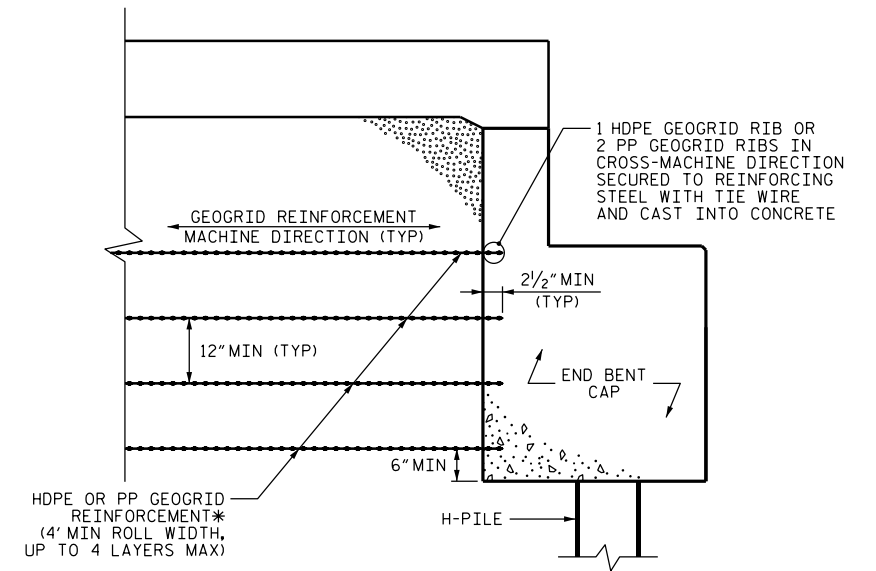


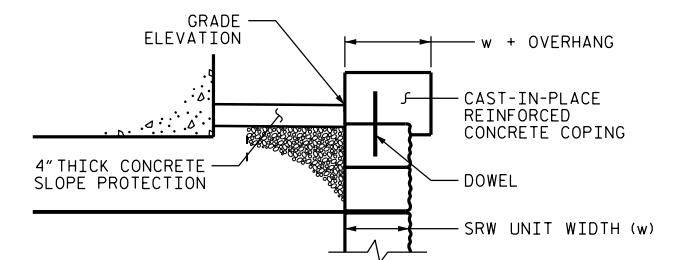
MSE ABUTMENT WALL WITH SRW UNITS - TYPICAL SECTION

*SEE ROADWAY PLANS FOR FINISHED GRADE DETAILS.
 **SEE MSE RETAINING WALLS PROVISION AND IF APPLICABLE, MSE WALL NOTES FOR EMBEDMENT AND REINFORCEMENT LENGTH REQUIREMENTS.



GEOGRID REINFORCEMENT CAP CONNECTION DETAIL

*HDPE GEOGRID IS REQUIRED FOR GEOGRID REINFORCEMENT CONNECTED TO BACKWALL OF END BENT CAP WHEN HDPE GEOGRID REINFORCEMENT IS CONNECTED TO SRW UNITS. HDPE OR PP GEOGRID IS REQUIRED FOR GEOGRID REINFORCEMENT CONNECTED TO BACKWALL OF END BENT CAP WHEN PET GEOGRID REINFORCEMENT IS CONNECTED TO SRW UNITS. IF NECESSARY, SPLIT HDPE OR PP GEOGRID REINFORCEMENT IN THE MACHINE DIRECTION BY CUTTING RIBS IN THE CROSS-MACHINE DIRECTION TO ACCOMMODATE VERTICAL SUPPORTS FOR END BENT FORMWORK (MINIMUM 2 FT SPACING BETWEEN CUTS). DO NOT SPLICE PP GEOGRIDS; CONTINUOUS PP GEOGRID REINFORCEMENT IN THE MACHINE DIRECTION IS REQUIRED.



COPING DETAIL

PRELIMINARY PLANS
 DO NOT USE FOR CONSTRUCTION

	NORTH CAROLINA DEPARTMENT OF TRANSPORTATION DIVISION OF HIGHWAYS	STD CELL Wall_MSE_SRWUnits_Abutment_HPiles_Sleeves
	GEOTECHNICAL ENGINEERING UNIT	MSE ABUTMENT WALL WITH SRW UNITS, END BENT ON H-PILES AND PILE SLEEVES - TYPICAL AND COPING & GEOGRID CAP CONNECTION DETAILS
		DATE: 5-16-17